



CANUC
RESOURCES CORPORATION



IOCG Discovery Potential with cash flow strategy

DEC 2025

TSX-V: [CDA](#) | OTCQB: [CNUCF](#) | WKN: [A14ZX4](#)

“We seek to deliver outstanding returns for our shareholders with the discovery of Tier-1 gold, silver and copper metal endowments, IOCG classification deposit types, in leading extractive jurisdictions. We also develop profitable cash flow projects to provide capital for exploration while minimizing share issuance and shareholder dilution.

This strategy is designed to achieve the maximum possible share price re-rating, with successful discovery.”

Christopher Berlet B.A.Sc.(Mining), CFA CEO & Director

IOCG DISCOVERY POTENTIAL

with cash flow strategy

- Copper-gold [IOCG](#) geology
Sudbury, Ontario
- Silver-dominant [IOCG](#) geology
Sonora, Mexico

- Natural gas cash flow
West Texas, USA
- Gold tailings recovery cash flow
Sudbury, Ontario

IOCG Iron Oxide Copper Gold ore deposits

Wikipedia

Iron Oxide Copper Gold ore deposits (**IOCG**) are important and highly valuable concentrations of copper, gold and uranium ores hosted within iron oxide dominant gangue assemblages which share a common origin.

These ore bodies range in size from around 10 million tonnes of contained ore, to 4 billion tonnes or more ...

The tremendous size, relatively simple metallurgy and relatively high grade of IOCG deposits can produce extremely profitable mines.

Discovery Potential – IOCG Deposit Type

IOCG DISCOVERY POTENTIAL

East Sudbury Project (ESP)

Schandl and Gordon (2007), Scadding Mine is an <u>IOCG model</u>	2007
Dr. Louise Carriveau (2007), McLaren Lake Fault & Scadding <u>IOCG</u>	2007
MacDonald Mines gravity survey, large gravity anomalies identified	2019

San Javier Project

Dr. Murray Hitzman (2006), San Javier Project is an <u>IOCG model</u>	2006
Massive magnetite (with silver) discovered on Canuc's El Tule claim	2020
<i>Silver Halide <u>dominance</u> confirmed, <u>Putoranite</u> (IOCG mineralogy)</i>	2022
Alkaline environment vs. calc-alkaline – <u>suggests IOCG ore genesis</u>	

Expert Consensus

East Sudbury Project



IOCG Discovery Model

100% owned

World-class mining camp

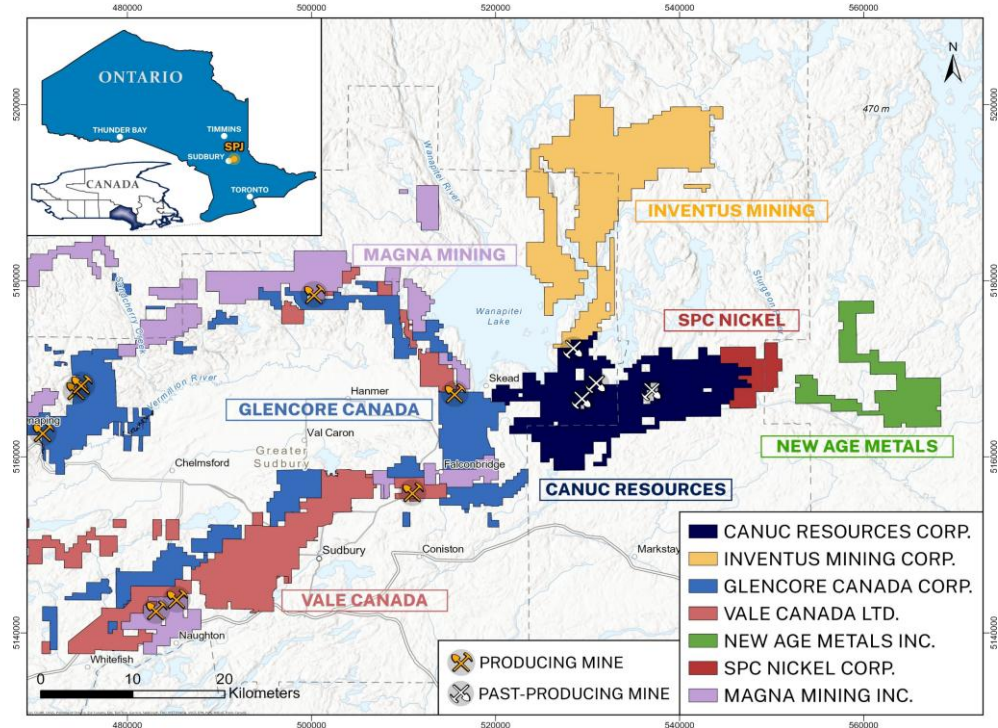
Majors surrounding

High-grade gold mines

High-grade copper mines

IOCG ore genesis model

* **Expert Consensus**



East Sudbury Project



IOCG Discovery Model

McLaren Lake Fault Zone

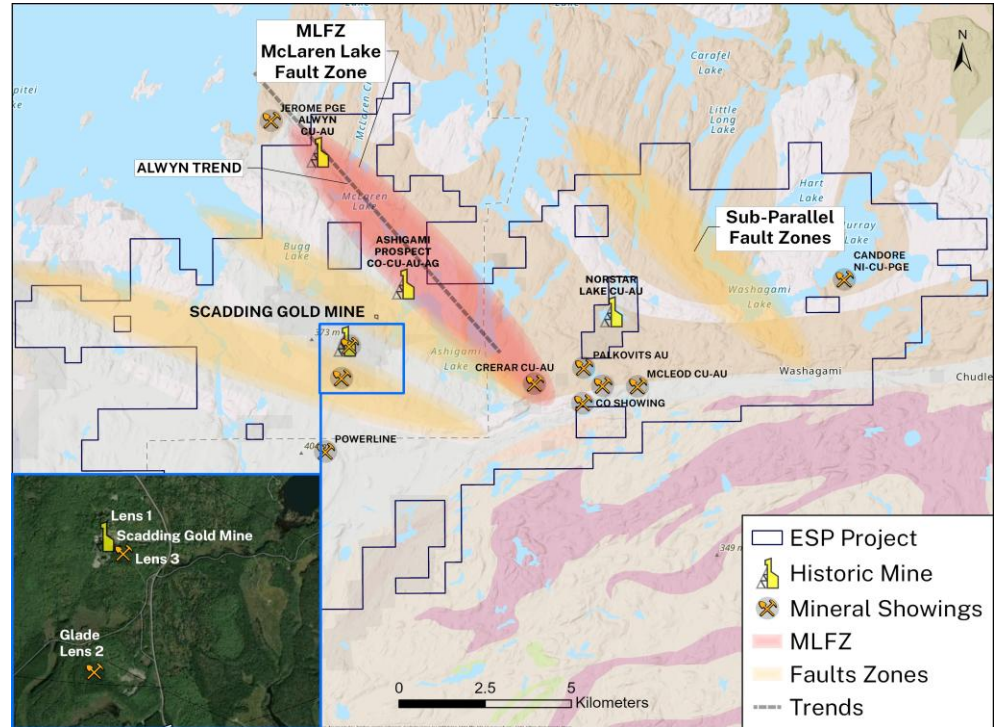
NRCan Seismic

Scadding Gold Mine Area

Gold and copper mines

Gold with Fe-Chlorite

Gold tailings onsite



San Javier Project



IOCG Discovery Model

100% owned

Established Mining Camp

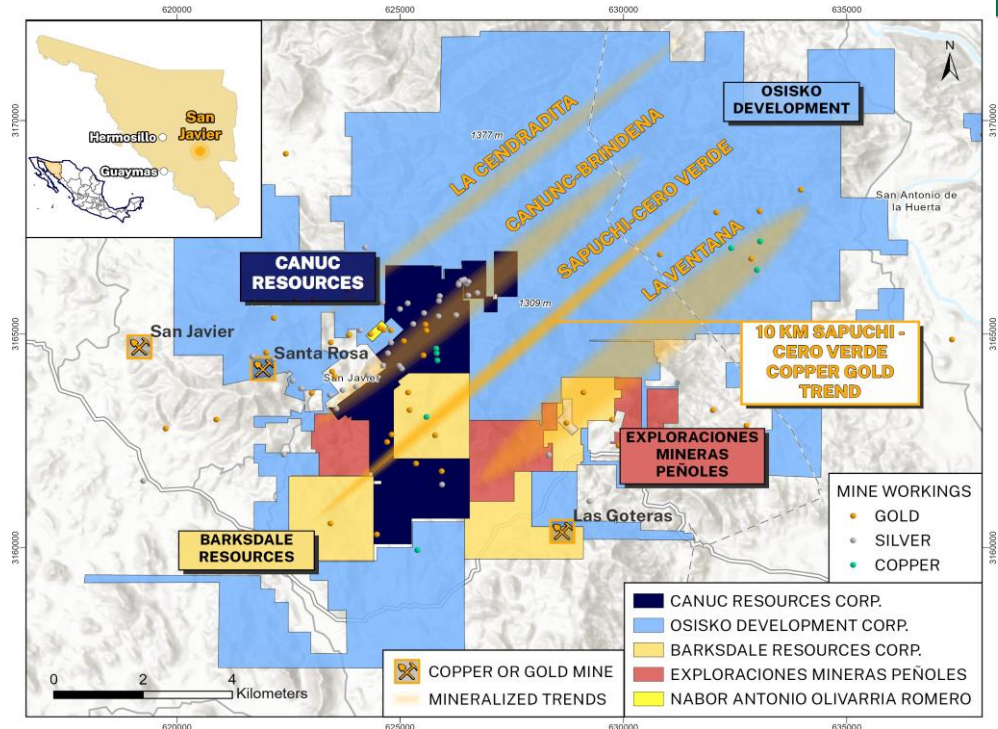
Companies both sides

10 km copper-gold trend

Copper and gold mines

IOCG ore genesis model

* **Expert Consensus**



San Javier Project



IOCG Discovery Model

Silver-dominant IOCG

Silver in magnetite

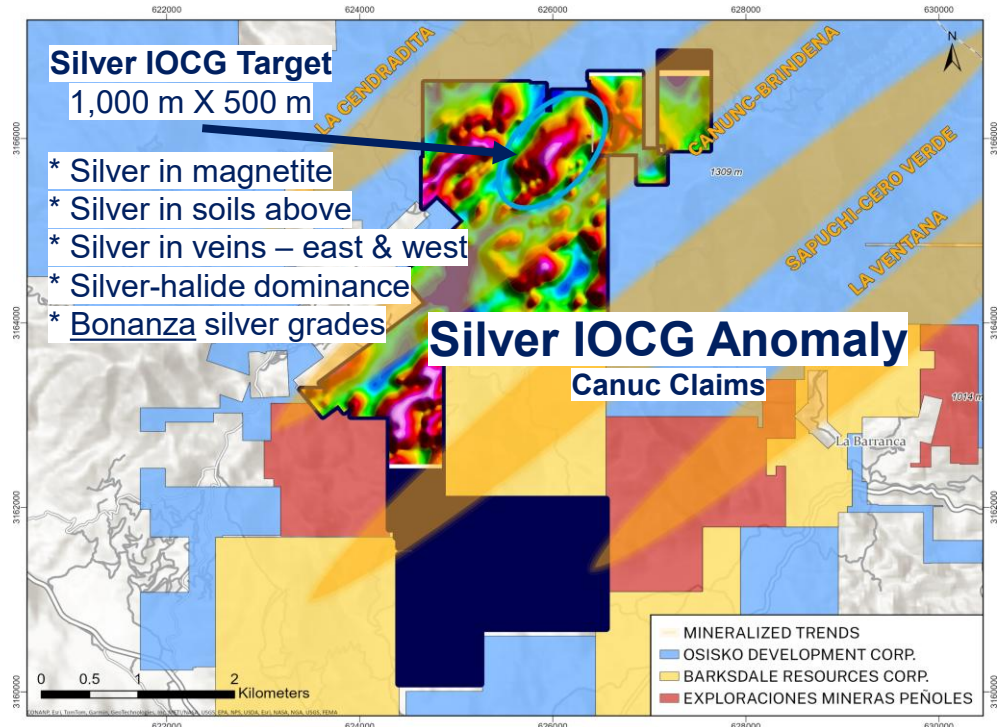
Silver vein mine workings

Silver in soils above

Silver-halide dominance

Bonanza silver grades

IOCG mineralogy





NATURAL GAS PRODUCTION

8 Producing Natural Gas Wells, West Texas

Year	MCF Gas	Revenue (CAD\$)
2022	42,229	\$ 370,286
2023	46,743	\$ 191,211
2024	26,244	\$ 89,211
Total 2011-2024	802,067	~ \$ 3.5 M

- 8 producing natural gas wells, rights for in-field developments
- Very low decline rates, several zones still ‘behind pipe’
- Pipeline access directly to the property

Management seeks cash flow opportunities to minimize dilution *



GOLD TAILINGS

Gold tailings recovery project, Mining Claim LEA 107735

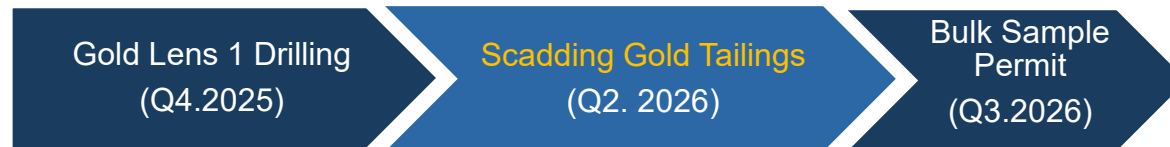
Year	Oz. Au	Revenue (CAD\$)	4% NSR
2026 est.	1,200 Oz.	~ \$ 6 M	~ \$ 240 K
2027 est.	1,600 Oz.	~ \$ 8 M	~ \$ 320 K
2028 est.	1,600 Oz.	~ \$ 8 M	~ \$ 320 K
Total	4,800 Oz.	~ \$ 22 M	~ \$ 880 K

- ~ 150,000 tonnes gold mine tailings, grading 1.13 g/t Au.
- Rapid leach kinetics, permit secured in Nov.2023
- Plant construction in progress

Management seeks cash flow opportunities to minimize dilution *

2025 – 2026

Drilling Gold Lens 1, Scadding Gold Mine	Q4.2025
Resource Calculation Gold Lens 1	Q1.2026
<u>Seismic Survey</u> McLaren Lake Fault Zone (MLFZ)	Q2.2026
Property-Wide <u>Airborne Gravity Survey</u> ESP	Q1.2026
Gold Tailings Recovery - begins	Q2.2026
<u>IOCG Target Drilling</u> ESP Project	Q3.2026
<u>Bulk Sample Mining Permit</u> Gold Lens 1	Q3.2026



CAPITAL STRUCTURE

		Exercise Price	Expiry Date
Common Shares	27,777,458		
Warrants	3,200,000	\$1.50	Apr.2027
Options	0	-	-
Fully Diluted	30,977,458		
Insider Ownership	~ 35%		
Institutional	~ 4%		

Senior Management



Christopher J. Berlet, B.A.Sc.(Mining), CFA
Mining Engineer (Canada) / London School of Economics (UK) / CFA Charterholder (2004)
<https://ca.linkedin.com/in/chrisberlet>

President, CEO & Director

Geological Team

Seymour M. Sears, B.A., B.Sc., P. Geo.
B.A., B.Sc. (Geology), Professional Geologist
<https://ca.linkedin.com/in/seymour-sears-16470a11>

Qualified Person for the Company

Dr. Jean-François Montreuil, P. Geo, PhD.
PhD. M.Sc., B.Sc. (Geology), P. Geo.
<https://ca.linkedin.com/in/jean-françois-montreuil-54512a67>

IOCG Consultant

Tito R. Montaña, MSc (Geology)
BSc (Geology) / MSc (Geology) Sonora State University

VP Exploration, Mexico

Robert Finley
Robert was educated in New England and has several years of international commodity experience.

SVP Corporate Development

Board of Directors



Christopher J. Berlet, B.A.Sc.(Mining), CFA
President, CEO & Director for Canuc Resources Corp.
<https://ca.linkedin.com/in/chrisberlet>

Director, CEO

Marcus Chase, B.Eng. (Electrical)
President Mineração VMC LTD
www.linkedin.com/in/marcusmchase/

Independent Director

Christopher Cheng, P.Eng., B.Sc. (Mechanical)
Managing Director of Eavor GmbH
www.linkedin.com/in/chengrr/

Independent Director

Kevin Olson, B.Com.
VP Business Development, Maven Pressure Diagnostics Inc.
www.linkedin.com/in/kevinmolson/

Independent Director

Artie Li, CPA, CA
CFO & Director for Canuc Resources Corp.
www.linkedin.com/in/artie-li-cpa-ca-01b10382/

Director, CFO

Contact

Canuc Resources Corporation

cberlet@canucresources.ca

Phone: (416) 525 - 6869

www.canucresources.ca

Suite 607, 130 Queens Quay East

Toronto, Ontario

Canada M5A 0P6



TSX-V: [CDA](#) | OTCQB: [CNUCF](#) | WKN: [A14ZX4](#)