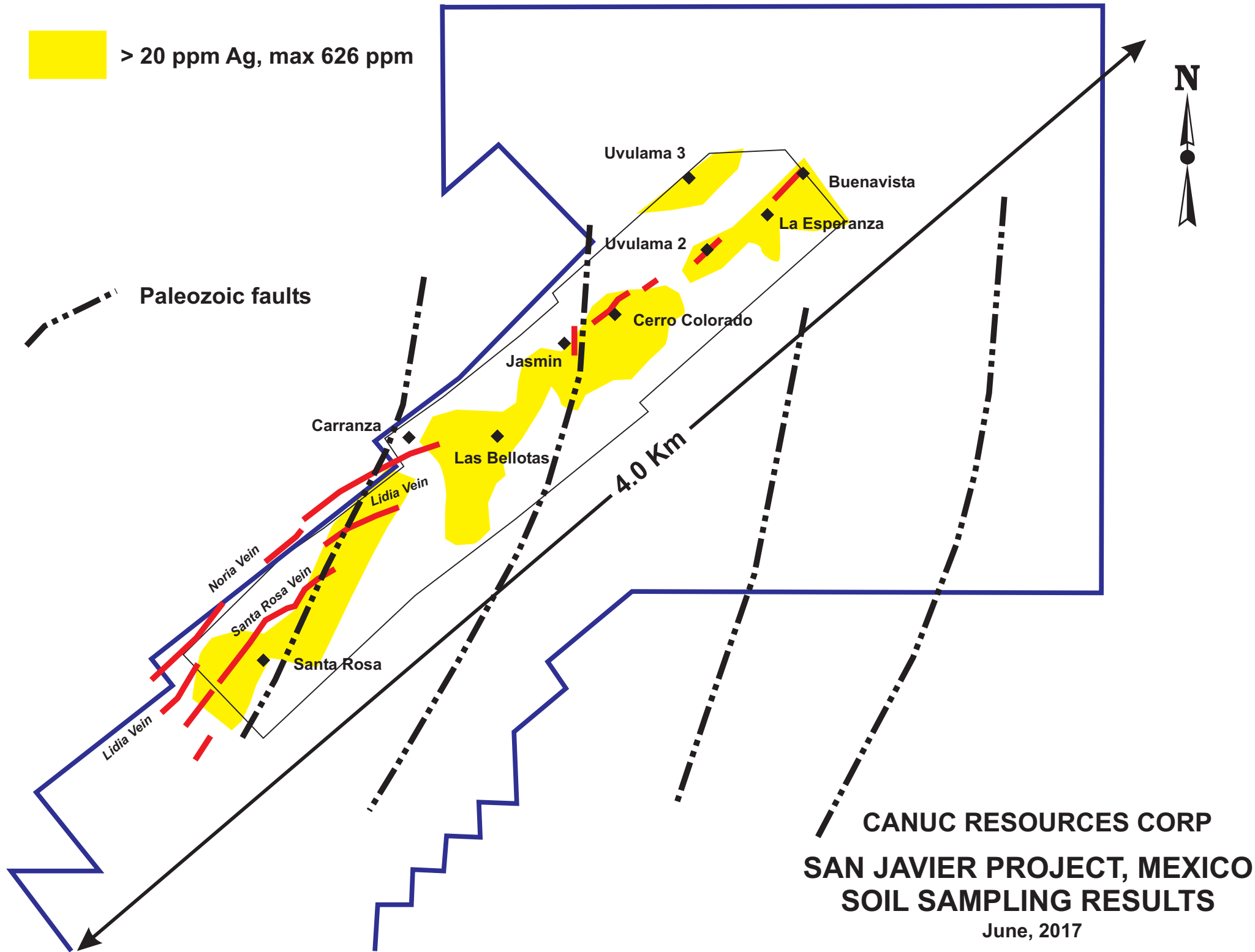
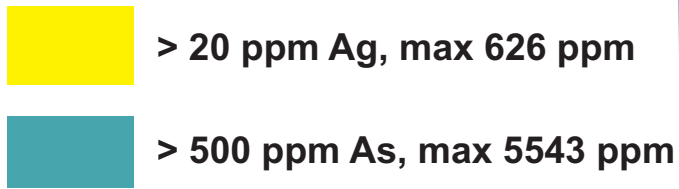
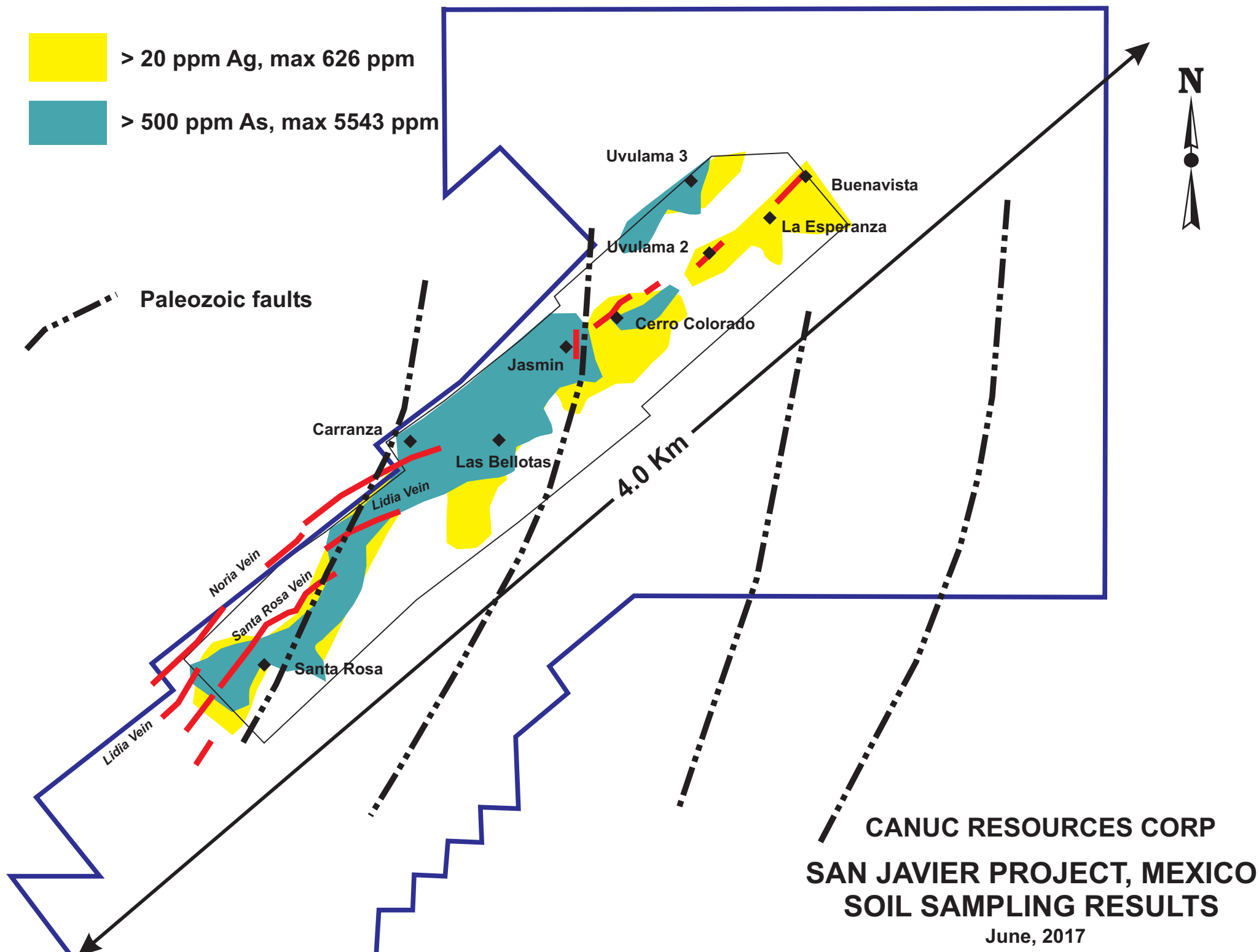


 > 20 ppm Ag, max 626 ppm





Paleozoic faults



Uvulama 3
Buenavista

Uvulama 2
La Esperanza

Cerro Colorado

Jasmin

Carranza

Las Bellotas

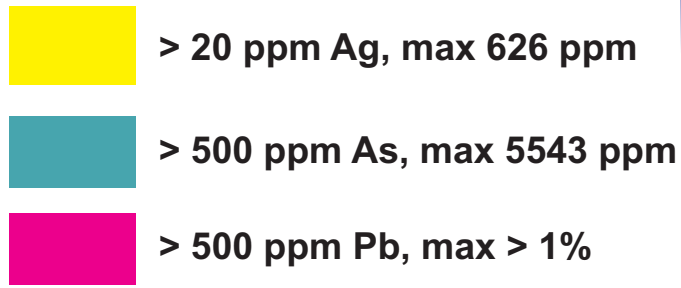
Lidia Vein

Noria Vein

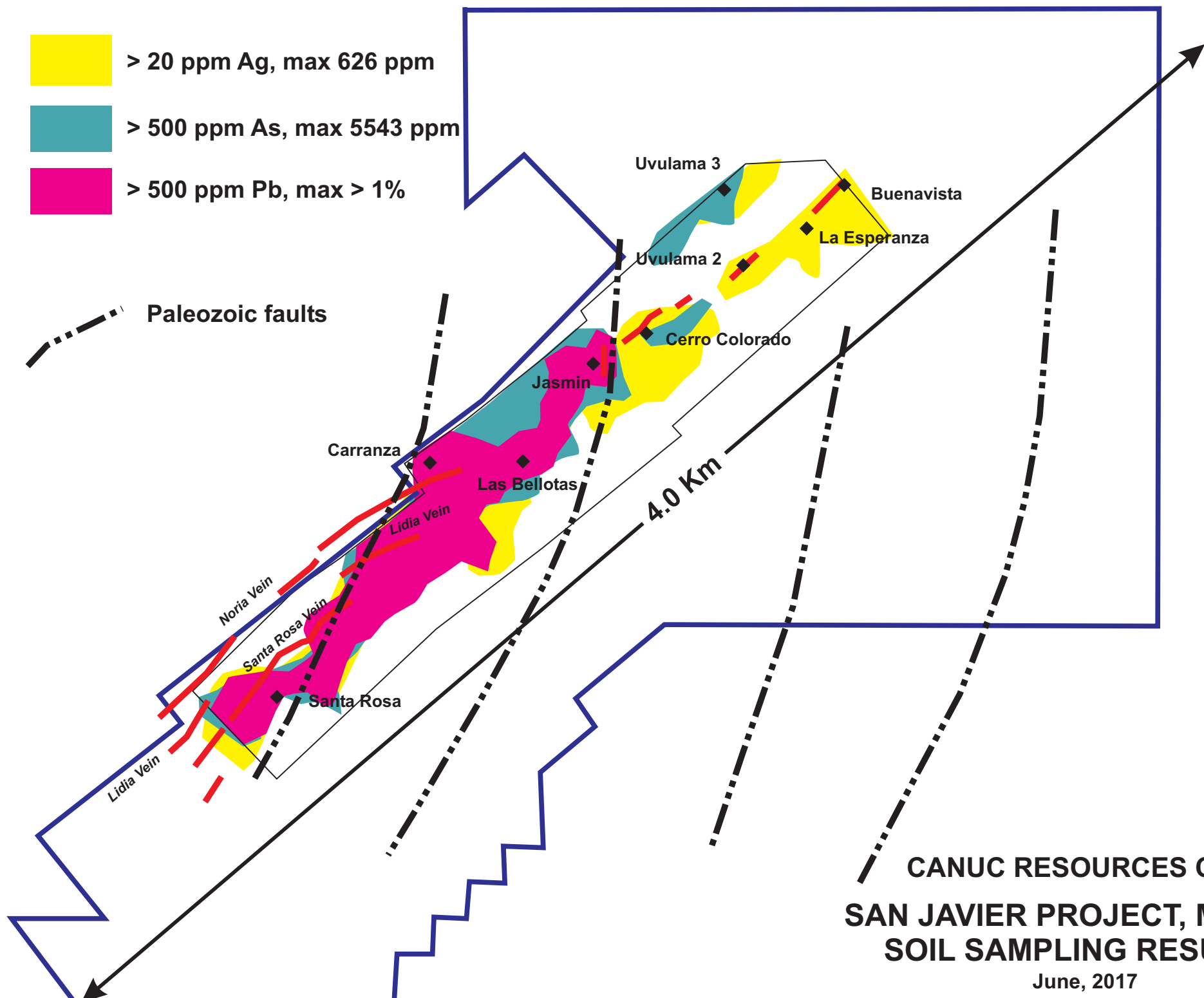
Santa Rosa Vein

Santa Rosa

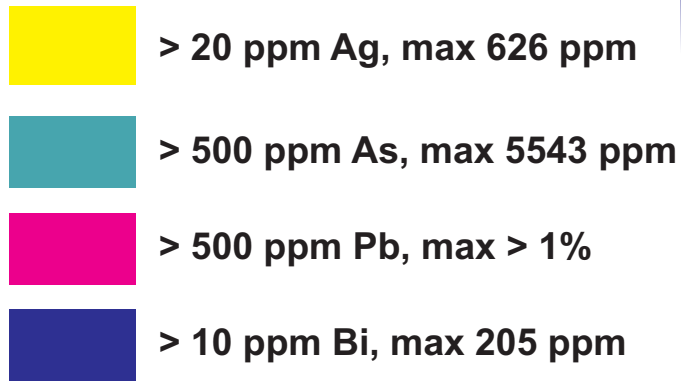
Lidia Vein



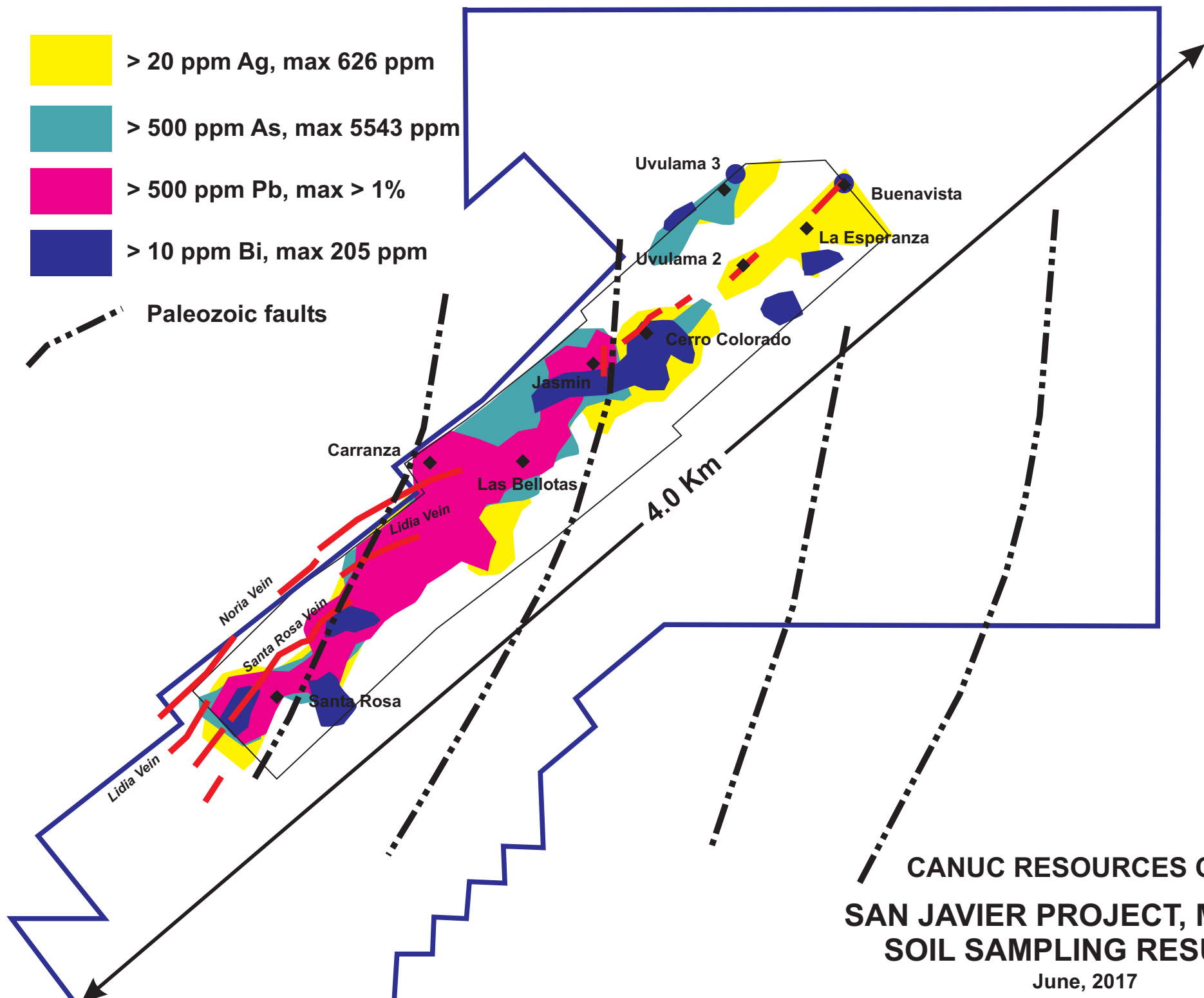
Paleozoic faults



CANUC RESOURCES CORP
SAN JAVIER PROJECT, MEXICO
SOIL SAMPLING RESULTS
 June, 2017



Paleozoic faults



**CANUC RESOURCES CORP
 SAN JAVIER PROJECT, MEXICO
 SOIL SAMPLING RESULTS**

June, 2017