



CANUC
RESOURCES CORPORATION



* High-Value
Discovery Potential

MAY 2026

TSX-V: [CDA](#) | OTCQB: [CNUCF](#) | WKN: [A41V6H](#)



IOCG DISCOVERY POTENTIAL

with cash flow strategy

- Copper-Gold IOCG geology Sudbury, Ontario
- Silver-dominant IOCG geology Sonora, Mexico

- natural gas cash flow West Texas, USA
- 4% gold tailings recovery cash flow Sudbury, Ontario
- gold mine bulk sample startup cash flow Sudbury, Ontario

Discovery and Cash Flow



“We seek to deliver outstanding returns for our shareholders with large-scale discovery of 100% owned Tier-1 gold, silver and copper metal endowments, **IOCG classification deposit types**, in leading extractive jurisdictions. We are also developing profitable cash flow businesses with a view to minimizing share issuance and shareholder dilution.

This strategy is designed to achieve the maximum possible share price re-rating, with successful discovery.”

Christopher Berlet B.A.Sc.(Mining), CFA CEO & Director

Disciplined Capital Structure



		Exercise	
Common Shares	30,101,253		
Warrants	3,200,000	\$1.50	Apr.2027
Warrants	900,000	\$1.80	Dec.2027 * Trigger
Fully Diluted	34,201,253		
Insider Ownership	~ 40%		
Institutional	~ 5%		

* warrant trigger when 30 Day VWAP > \$2.40 | then 30 days to exercise



Exploration Potential

- Large-scale [IOCG](#) discovery potential Ontario, Canada 100% interest
- Large Scale [IOCG](#) discovery potential Sonora, Mexico 100% interest

Cash Flow Projects (Minimize Shareholder Dilution)

- Long-life, low decline rate natural gas wells & interests West Texas, USA
- 4% NSR on gold tailings production startup Ontario, Canada
- High-grade gold mine bulk sample startup Ontario, Canada



IOCG Iron Oxide Copper Gold ore deposits

[Wikipedia](#)

Iron Oxide Copper Gold ore deposits (**IOCG**) are important and highly valuable concentrations of copper, gold and uranium ores hosted within iron oxide dominant gangue assemblages which share a common origin.

These ore bodies range in size from around 10 million tonnes of contained ore, to 4 billion tonnes or more ...

The tremendous size, relatively simple metallurgy and relatively high grade of IOCG deposits can produce extremely profitable mines.

Discovery Potential – IOCG Deposit Type



IOCG DEPOSIT MODEL EVIDENCE

East Sudbury Project (ESP), Ontario, Canada

Schandl and Gordon (2007), Scadding Mine is an IOCG deposit model 2007

Dr. Louise Carriveau (2007), McLaren L. Fault is IOCG deposit model 2007

MacDonald Mines gravity survey detects large (Iron) gravity anomalies 2019

Natural Resources Canada ([NRCan](#)), IOCG targeting seismic survey 2026

San Javier Project, Sonora, Mexico

Dr. Murray Hitzman (2006), San Javier is an IOCG deposit model 2006

Massive magnetite (silver in iron) discovered on Canuc claims (El Tule) 2020

Silver Halide dominance confirmed, Putoranite (IOCG mineralogy) 2022

Alkaline environment vs. calc-alkaline – consistent with IOCG ore genesis model

Expert Consensus

East Sudbury Project (ESP)

IOCG Discovery Model

100% owned

World-class mining area

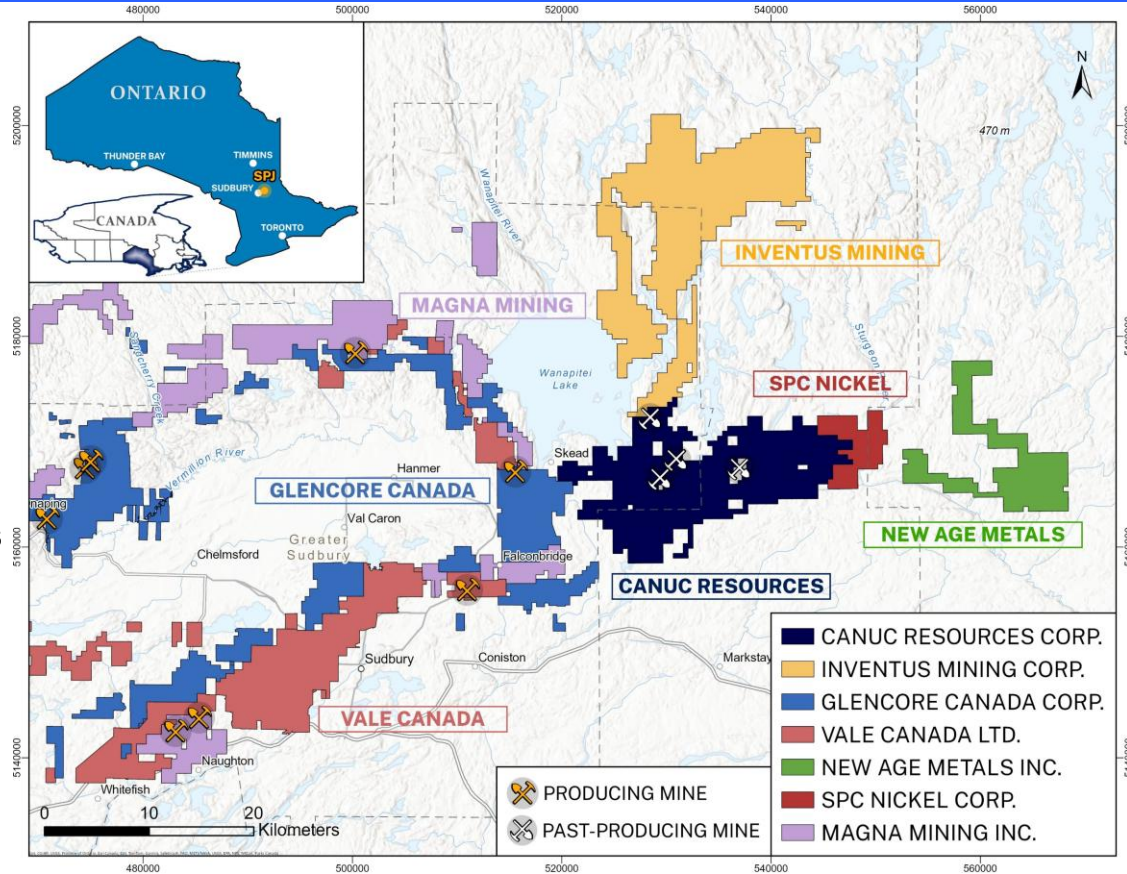
Majors surrounding

Past producing gold mines

Past producing copper mines

IOCG ore genesis model

* IOCG Mineralogy



East Sudbury Project (ESP)

[IOCG](#) Discovery Model

Major Target Definition 2026

[BellGeo](#) Gravity Survey

[NRCan](#) Seismic Survey

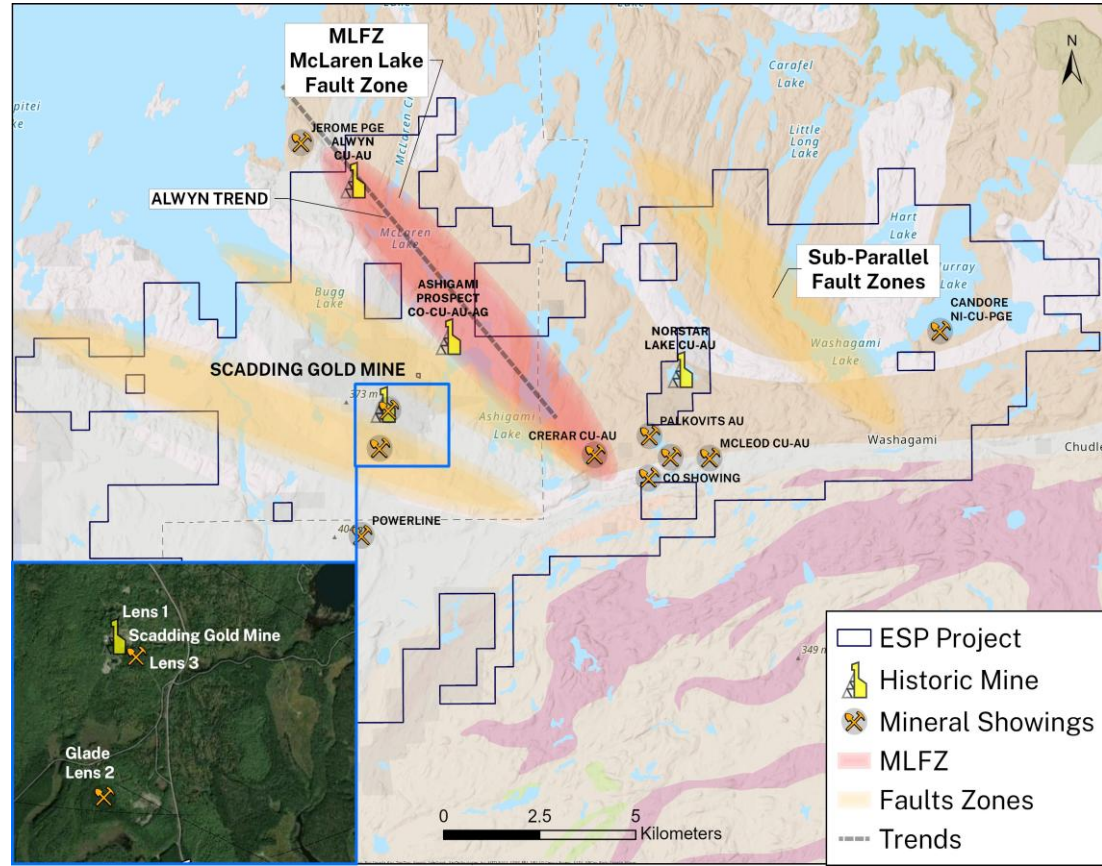
Gold, Copper, Cobalt, PGMs

Gravity Anomalies 2019

Au, Cu, Co with Fe-chlorite

Multiple Historical Mines

* **Expert Consensus**



San Javier Project

IOCG Discovery Model

28 Claims 100% owned

Center of a Mining Camp

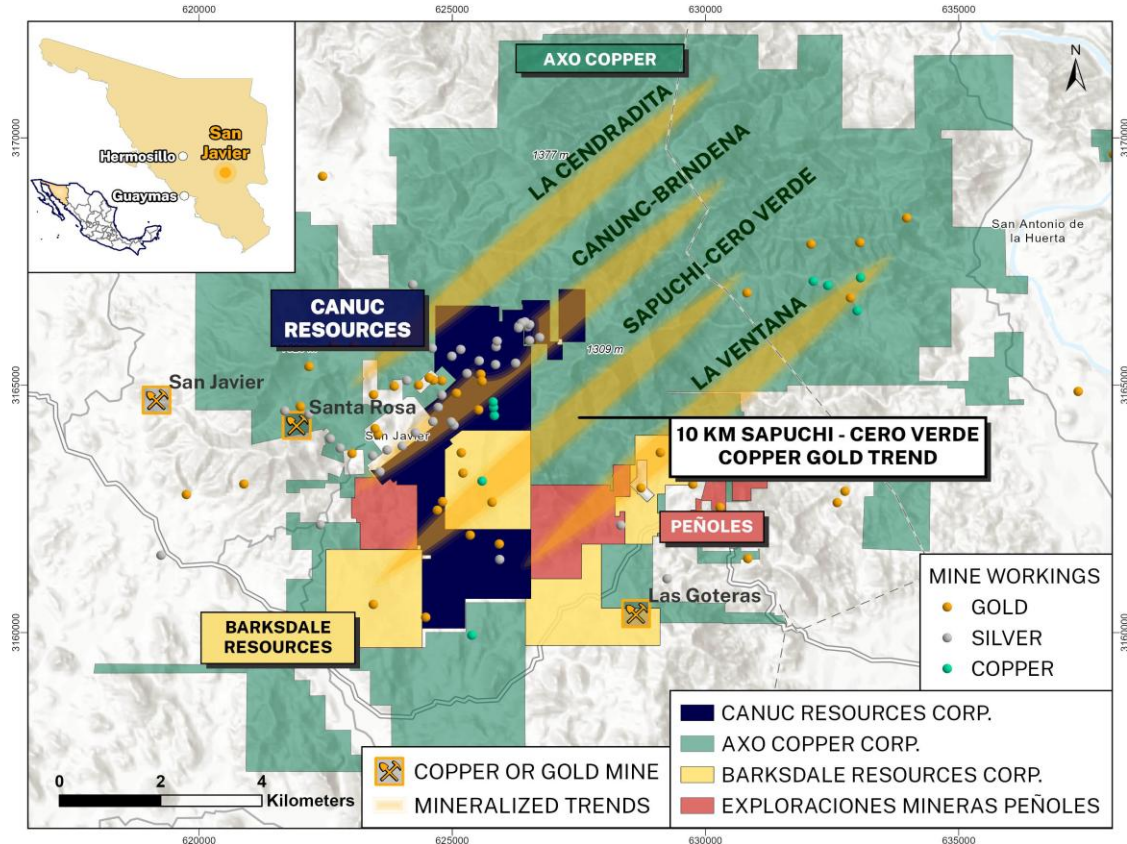
4 Public Companies

10 km Copper-Gold Trend

Copper & Gold Mines

IOCG ore genesis model

* IOCG Mineralogy



San Javier Project

IOCG Discovery Model

Silver-dominant IOCG model

Silver in Fe Oxides

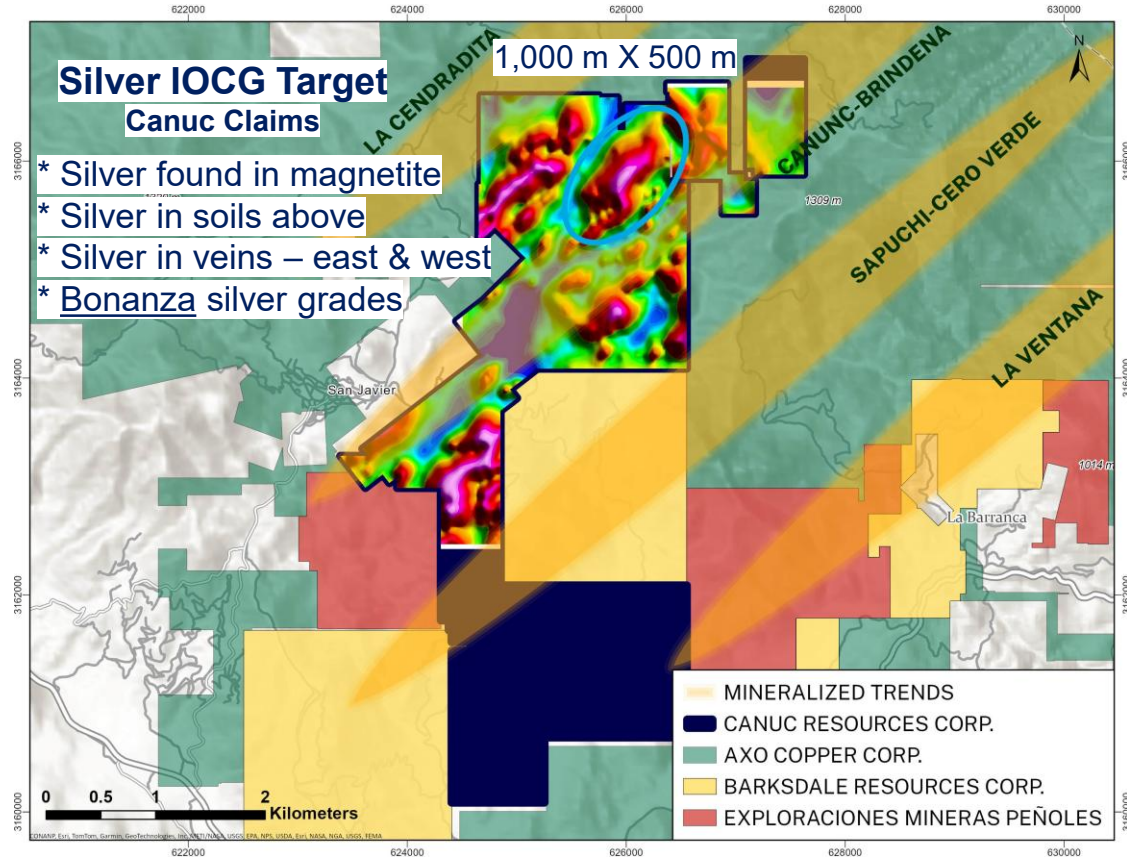
Multiple vein mine workings

IOCG alteration sequence

Silver-halide dominance

Putoranite

* **Expert Consensus**





CURRENT NATURAL GAS PRODUCTION

8 Producing Natural Gas Wells, West Texas

SCADDING GOLD TAILINGS

4% Royalty Payable from Gold Tailings, Mining Claim LEA 107735

- 8 long-life, low decline rate producing gas wells producing cash flow
- 4% gold royalty payable from 150,000-ton tailings reprocessing operation
- Safe jurisdiction, dilution control methodology

Management seeks cash flow opportunities to minimize shareholder dilution *



LENS1 (2,3) GOLD MINE STARTUP

Bulk Sample Mining Permit Application in Progress (Q2.2026)

- Lens 1 Bulk Sample Gold Resource Calculation, June 2026
- Lens 1 Bulk Sample Mine Plan, Q2.2026
- Lens 1,2 & 3 Extractive Permit Application, H2.2026
- Safe jurisdiction, profitable, small-scale dilution control methodology

Management seeks cash flow opportunities to minimize shareholder dilution *

Action 2026



CANUC
Resources Corporation

Confirm Gold Assays, Gold Lens 1 (18 th March 2026)	Q1.2026
Bell Geospace FTG Gravity Gradiometry, IOCG Targeting	Q2.2026
NRCan Seismic Survey McLaren L. Fault, IOCG Targeting	Q2.2026
Confirm Gold Assays, Gold Lenses 2 & 3	Q2.2026
Resource Calculation, Gold Lens 1	Q2.2026
4% NSR Gold Tailings Production Startup	Q3.2026
<u>Begin drilling IOCG Targets</u> Sudbury, Ont.*	Q3.2026
Silver IOCG exploration work Sonora, Mexico	Q4.2026
Gold Lens 1 bulk sample <u>high-grade mining application</u>	Q4.2026

Gold Lens 1 Assays
(Q1.2026)

IOCG Gravity & Seismic
(Q2. 2026)

Lens 1 Gold
Mining Permit
(Q4.2026)

Christopher J. Berlet, B.A.Sc.(Mining), CFA
Mining Engineer (Canada) / London School of Economics (UK) / CFA Charterholder (2004)
<https://ca.linkedin.com/in/chrisberlet>

President, CEO & Director

Seymour M. Sears, B.A., B.Sc., P. Geo.
B.A., B.Sc. (Geology), Professional Geologist
<https://ca.linkedin.com/in/seymour-sears-16470a11>

QP (Qualified Person) Geologist

Dr. Jean-François Montreuil, P. Geo, PhD. (Geology)
PhD. M.Sc., B.Sc., P. Geo.
<https://ca.linkedin.com/in/jean-françois-montreuil-54512a67>

IOCG Specialist

Tito R. Montaña, MSc (Geology)
BSc (Geology) / MSc (Geology) Sonora State University

VP Exploration, Mexico

Robert Finley

SVP Corporate Development

Robert was educated in New England and has several years of international business experience.

Contact

Canuc Resources Corporation

cberlet@canucresources.ca

Phone: (416) 525 - 6869

www.canucresources.ca

Suite 607, 130 Queens Quay East

Toronto, Ontario

Canada M5A 0P6



TSX-V: CDA | OTCQB: CNUCD | WKN: A41V6H